



Geophysical Subsurface Surveys

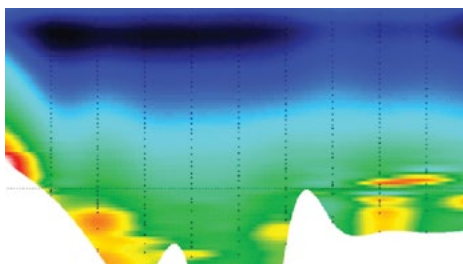
Earth Systems utilises its expertise in cutting-edge, non-invasive geophysical survey and mapping techniques to provide cost-effective subsurface exploration services for a range of environmental investigations. These techniques can be used to identify contaminated seeps and aquifers, and map groundwater quality and contaminant dispersal as well as subsurface geology.

Non-invasive geophysical mapping utilises the latest technology to conduct rapid and cost-effective subsurface surveys. Earth Systems' geophysical mapping services include:

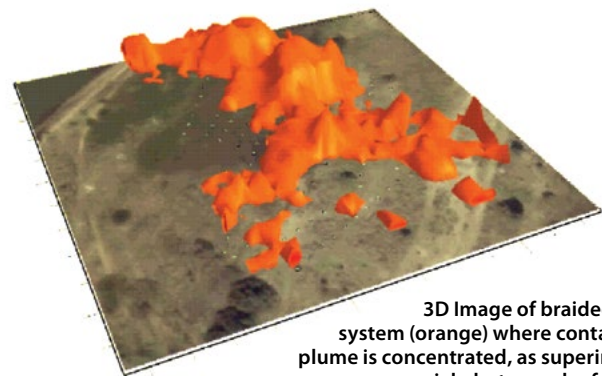
- Subsurface geological mapping
- Aquifer identification and delineation
- Groundwater quality mapping
- Contaminated site assessment
- Identification and mapping of leaks and seeps from dams, tanks, channels, landfills and mine waste structures.

These geophysical mapping techniques allow coverage of a number of hectares in just a few days, and can be used to differentiate between zones both horizontally and vertically.

The geophysical technologies utilised by Earth Systems can be used to acquire two-dimensional cross-sections to a depth specified by the investigation, which can be composited into highly informative three-dimensional reconstructions of the subsurface.



Cross-section of pollutant plume (dark blue) in sand channels incised by clay lenses (light blue).



3D Image of braided fluvial system (orange) where contaminant plume is concentrated, as superimposed over an aerial photograph of the site.

depth-resolving electromagnetic techniques (eg. TEM), resistivity and self potential.

OUR EXPERIENCE

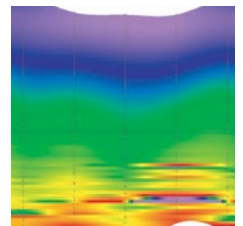
Earth Systems has recent experience in non-invasive subsurface mapping throughout Australia, including:

- Delineation of DNAPL and LNAPL plumes and identification of other potential off-site migration pathways.
- Characterisation of aquifer system at a power station to establish connectivity between aquifers and saline seeps.
- Cross-section of pollutant plume (dark blue) in sand channels incised by clay lenses (light blue) .
- This information assisted with prevention of contamination of local waterways.
- Identification of sulphate distribution at an abandoned mine in South Australia.
- Identification of water accumulation within mine wastes to assess geotechnical stability and develop remediation actions.
- Characterisation of potential pollutant migration paths from a landfill to prevent potential contamination of Ramsar wetlands.

SERVICES PROVIDED

Earth Systems can design and implement a detailed geophysical program, process and interpret data, provide reports and combined with advanced geochemical and hydrogeological expertise, use this knowledge to help address site issues.

The geophysical methods used by Earth Systems are at the forefront of technological innovation and include ground magnetics, ground penetrating radar, standard electromagnetic techniques,



AUSTRALIA

earthsystems.com.au

MELBOURNE

14 Church St
Hawthorn, 3122
Victoria
+61 3 9810 7500

PERTH

Suite 5
1200 Hay Street
West Perth, 6005
Western Australia
+61 8 6161 4194

BRISBANE

PO Box 541
Lutwyche, 4030
Queensland
+61 7 3129 6075

DARWIN

PO Box 1228
Nightcliff, 0810
Northern Territory
+61 423 618 124

AFRICA

earthsystemsafrika.com

DAKAR

3ème étage
Route de l'aéroport
Ngor, Dakar
Senegal
+221 3386 83023

KIGALI

25 Benjamina St
(KG412),
Gacuriro, Kigali
Rwanda
+250 787 807 499

ASIA

earthsystemsasia.com

VIENTIANE

Suite 502, 23 Singha
Road, Ban Nongbone,
Xaysetha, Vientiane.
Lao PDR
+85 621 454 434

CHINA

earthsystems.com.cn

SHANGHAI

19F World Plaza
855 Pudong South Rd
Shanghai, 200120
China
+86 216 887 2968

EUROPE

earthsystemseurope.com

BRISTOL

Suite 104, CityPoint
Temple Gate
Bristol, BS1 6PL
United Kingdom
+44 117 373 6153